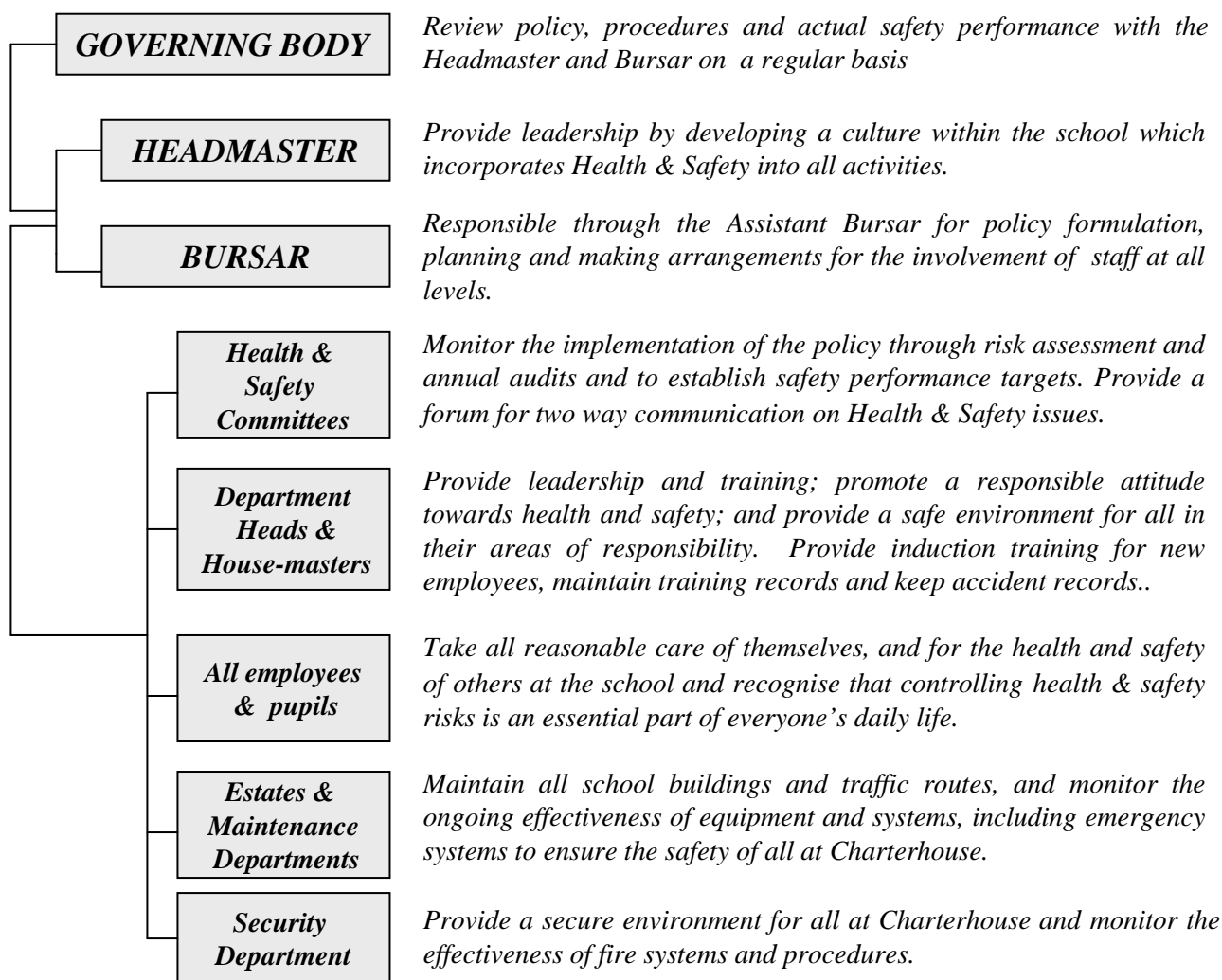


Health and Safety Policy Statement*

Our policy is to provide and maintain safe and healthy working conditions, equipment and systems of work for all our pupils and employees, and to provide such information, training and supervision as they need for this purpose. We also accept our responsibility for the health and safety of visitors to Charterhouse.

We are committed to achieving excellence hence it follows that minimising risk to people and property is inseparable from all other school objectives. We encourage the active participation of all staff in the achievement of our safety goals and have established Health & Safety Committees to facilitate this.

The allocation of duties for health and safety matters and the particular arrangements which we will make to implement the policy are set out below.



Our policy will be kept up to date. To ensure this, the policy and the way in which it has operated will be reviewed every year.

* The full Health and Safety Policy is available from the School on request. Please email bursar@charterhouse.org.uk