



CHARTERHOUSE

**LEAVING A
LASTING LEGACY**

1960 Science class



Creating a new tomorrow

Our story began with Thomas Sutton's extraordinary bequest in 1611, a remarkable act of generosity. His vision has been supplemented by further bequests since then, from people who have shared his faith in the power of education to shape young people's lives for the better.

Their legacy is the School we know today, and countless Carthusians have benefited from their generosity over the past four centuries. It now falls to us, the current generation, to ensure the School continues to develop and is handed on to future generations to benefit from.

Charterhouse will lead the debate about how young people are best prepared for a rewarding adult life. A Charterhouse education really should last a lifetime and

we want to ensure that the modern, progressive and enjoyable learning offered at Charterhouse truly prepares Carthusians to lead fulfilled and purposeful lives.

Building upon historic Carthusian values, we are shaping an academically-focused, all-round School where individual wellbeing and growth comes first. We place a strong emphasis on personal values and in supporting pupils to become the young adults they wish to be.

We hope that after you have looked after your loved ones, you will consider leaving a lasting legacy to Charterhouse by making a bequest in your Will. Your support will help to ensure that the School continues to thrive, delivering exceptional education for pupils, long into the future.

Why consider a gift to Charterhouse in your Will?

A Charterhouse education is a transformative experience. Fees will continue to fund the School's running costs but are not sufficient to fund major new developments, or give us the opportunity to offer significant numbers of bursaries.

We want to ensure that Carthusians gain a breadth of knowledge and experiences which go far beyond those that lead to public examination success.

We must also teach values as well as knowledge. We want our Carthusians to leave Charterhouse with the responsibility, perseverance, open-mindedness, moral courage and

kindness that will shape the rest of their lives in profoundly positive ways.

Making a bequest is one of the most significant ways of leaving a lasting imprint on the School, and as a registered charity all bequests to Charterhouse from UK taxpayers are free of inheritance tax.

Leaving a legacy to the School can also help to reduce the overall tax liability on your estate.

We hope you share our belief in the value of the education we provide and that you will consider supporting the School in this way.

1956 choir practice in Chapel





I enjoyed a remarkable five years at Charterhouse. It provided me with many of the foundations upon which I have built my life.

I want to help ensure that future generations can benefit as I did. One of the most meaningful ways I can do this, is by remembering Charterhouse in my Will.

To ensure Charterhouse thrives well into the future, I encourage everyone connected to the School to consider their own support, to ensure our School – one of the greatest in the country, remains a leading educational light.

James Wyatt (g83)

OC, Current Parent and Thomas Sutton Society
Patron



The four ages of Charterhouse

1611

Thomas Sutton's bequest founds a school for 40 scholars in London

1872

The School relocates from London to Godalming

1878 Pupil numbers exceed 500

1916 Brooke Hall is completed, providing a common room for beaks

1927 Memorial Chapel, built by Sir Giles Gilbert Scott, is consecrated

1971

First female pupils begin their studies at School

1972 New boarding houses open, completing the School campus

1997 Queen Elizabeth II opens the Queen's Sports Centre

2018

School announces plans for full coeducation, increasing pupil numbers from 800 to 960

2018 New Science and Mathematics building opens

2020 Pedestrianisation of central School

2021 Two new boarding houses open

2023+ Girls in all year groups and ongoing investment across campus

A life-changing education

Rupert joined Charterhouse aged 13, in September 2014, having been a chorister at King's College, Cambridge. Rupert is a talented musician and was awarded both a Music Scholarship and an Academic Exhibition, in conjunction with a bursary to study at Charterhouse.

He fully immersed himself into Carthusian life, joining choirs, ensembles and the orchestra. In addition to his music Rupert threw himself into co-curricular activities, including volunteering behind the scenes at the annual arts festival, Artifex. He also supported the Charterhouse Young Leaders programme working with a primary school in London.

Rupert left Charterhouse with an outstanding set of academic results and has gone on to study at Princeton in the US. His experiences at Charterhouse would not have been possible without the generous help given by supporters to our bursaries programme.



Never feel that you cannot achieve your dreams. As a result of Charterhouse's bursary scheme, I believe that I have had the best opportunity to realise my potential and my talents. I cannot put a value on

what Charterhouse has given me and the opportunities I have gained, neither can I thank enough all those supporters who have contributed to support bursary pupils at School.

For me, the Charterhouse effect has been huge and I believe that it can influence a person's life forever. The lessons and life values learnt stay with a Carthusian forever! So many of the opportunities that I have had, and will continue to have, are as a result of my time at Charterhouse; indeed, the way I now live and work was shaped by the School, and for that I will be eternally grateful.



Rupert Peacock (G19)

A gift that endures

What happens to your bequest is a matter of personal choice. Among the issues to consider are whether you have a specific purpose in mind, and whether you would prefer the School to spend the funds for the benefit of the current generation or endow them in perpetuity.

UNRESTRICTED LEGACY gives the School the flexibility to use its discretion in directing your bequest to wherever the need is greatest for maximum impact. This enables the school to make sure that your gift truly leaves a lasting legacy.

RESTRICTED LEGACY can reflect your wishes by directing your support towards a specific area of Charterhouse's activities. If you would like to make a restricted legacy, we would be delighted to discuss this with you to ensure that the School is able to honour and fulfil your wishes.

If you find yourself beneficiary of a Will, you may be interested to know that it is possible to transfer the whole or part of an inheritance to Charterhouse using a deed of variation. Bequests that are transferred in this way become free of inheritance tax, and can be an effective way to support the School during your lifetime.

Residuary Legacy is a gift of all or a percentage of your estate after specific bequests have been made. Residuary legacies will not be eroded by inflation.

Pecuniary Legacy is a bequest of a specific sum. They can be index-linked to ensure that the final amount gifted to the School keeps pace with inflation.

Specific Legacy relates to a bequest of stocks and shares, property, artworks or other objects.

Reversionary Legacy is a bequest that becomes payable to the School after the death of those who have been specifically named to benefit from the assets you leave.

Conditional Legacy requires a particular event to occur in order for Charterhouse to receive your bequest and is most common when you outlive all of the beneficiaries in your Will.



DOMINICAN
FUNDATOR
THOMAS
SUTTON
1511

Making or updating your Will

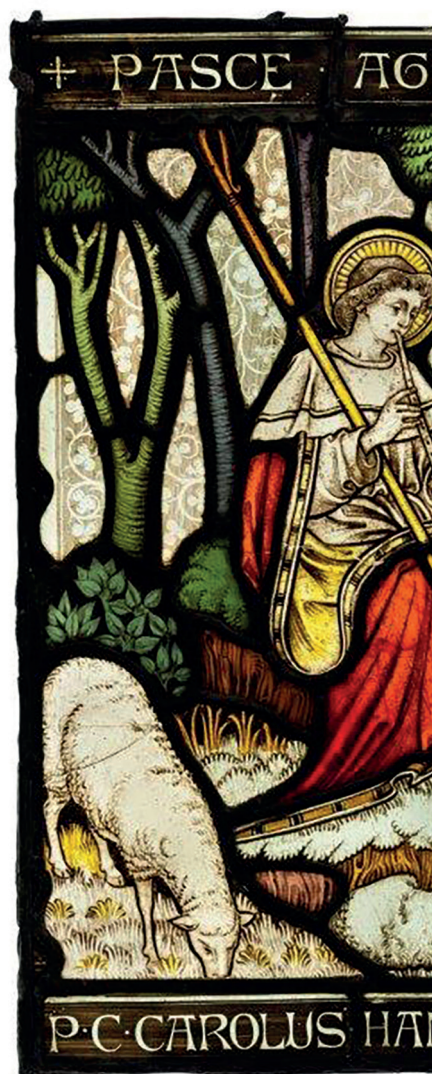
You can make provision for Charterhouse by establishing a Will naming the School as a beneficiary, or by amending an existing Will using a codicil.

We recommend that you seek qualified legal advice when drafting or amending your Will.

A bequest to Charterhouse should refer to the School by its full legal title:

The Governing Body of Charterhouse School (Registered Charity 312054)

If you would like to leave a restricted bequest we would be pleased to discuss this with you, to offer guidance about possible options that will ensure your wishes can be honoured in full. Contact details can be found on the back cover of this brochure.





Stained glass recovered from the original School chapel

The Thomas Sutton Society

If you would like to leave a legacy to Charterhouse, or have already made provision for the School in your Will, we would be grateful if you could let us know by completing the Legacy Pledge Form enclosed with this brochure.

All pledges of legacy support confer membership of the Thomas Sutton Society, which has been established to recognise the generosity of this important group of people.

We are delighted to invite members to special events. Unless otherwise requested, the names of members of the Thomas Sutton Society are recorded in School publications as a mark of our gratitude.



For more information please contact:

The Foundation Office
Charterhouse
Godalming
Surrey
GU7 2DX

+44 (0)1483 291759

foundation@charterhouse.org.uk

Registered charity 312054

If you would prefer not to receive
any future legacy appeals from
Charterhouse, you can opt out by
contacting the Foundation Office
